



International Coffee Organization
Organización Internacional del Café
Organização Internacional do Café
Organisation Internationale du Café

ICC 96-7

25 September 2006
Original: French

E

International Coffee Council
Ninety-sixth Session
25 – 29 September 2006
London, England

Overview of the coffee market

Coffee year 2005/06

Background

This document contains an overview of developments in the coffee market during coffee year 2005/06. It focuses on changes in the key variables of the world coffee economy, namely price movements, supply and demand.

Action

The Council is requested to take note of this report.

Introduction

1. The recovery in coffee prices recorded in 2005 continued during the first months of 2006 despite some downward corrections. The highest price in coffee year 2005/06 was recorded in January when the ICO composite indicator price reached an average of 101.20 US cents/lb. This level represented a marked improvement in relation to the averages of 79.35 cents for January 2005, 58.68 cents for January 2004 and 54.04 for January 2003. The average ICO composite indicator price for coffee year 2005/06¹ was 91.43 US cents/lb compared to 85.30 cents for coffee year 2004/05 and 57.77 cents for 2003/04. These price movements seem to indicate a recovery after the years of crisis in the coffee economy of exporting countries. The behaviour of market fundamentals indicates some break with the chronic oversupply that characterized the coffee market during the crisis years and a return to a situation of relative equilibrium between supply and demand, a factor favouring sustainable price maintenance. Stocks have been drawn down both in importing and exporting countries. Production has decreased in many exporting countries which were severely affected by the long period of low prices. Consumption continues to be robust and this increases pressure on stocks. World production in crop year 2005/06 was 106.86 million bags for an estimated total demand of 117 million bags for 2006². Notwithstanding these favourable fundamentals for maintaining prices, the market was not immune to unforeseen movements of a speculative nature.

I. Market prices

Composite indicator price

2. Table 1 shows the monthly ICO indicator prices and prices on the New York and London futures markets between 2000 and 2006, as well as the differential between the two. During coffee year 2005/06 average prices fluctuated between 82.55 and 101.20 US cents/lb. Despite some downward corrections, price levels in coffee year 2005/06 remained firm, indicating a certain recovery. Graph 1 shows the monthly average of the ICO composite indicator price from October 2000 to August 2006.

Colombian Milds

3. The indicator price for Colombian Milds, which recorded a monthly average of 126.92 US cents/lb in January 2006, fell back steadily before rising again to 114.14 cents in August. The average for coffee year 2005/06 was 113.01 US cents/lb, representing a slight rise compared to the average of 112.29 cents for the whole of coffee year 2004/05.

¹ It should be noted that price averages for coffee year 2005/06 are given as at 21 September 2006.

² Production for coffee year 2006/07 is estimated at 122 million bags.

Other Milds

4. The average of the indicator price of coffee year 2005/06 for Other Milds was below that for the whole of coffee year 2004/05. This indicates that prices for Other Milds did not remain firm despite having reached a level of 124.20 US cents/lb in January 2006. Nevertheless, the current level is above those for the period 1999 – 2004.

Brazilian Naturals

5. After rising to an average of 114.98 US cents/lb in January 2006, the price of Brazilian Naturals was subject to downward corrections and was only 99.20 US cents/lb in September 2006. The average for coffee year 2005/06 is 100.84 US cents/lb, slightly above the level of 98.22 cents for coffee year 2004/05.

Robustas

6. Prices of Robustas have improved since the beginning of 2006, with monthly averages moving between 59.60 and 73.59 US cents/lb. Recent market developments are characterized by a sharp rise in Robusta prices. The average for coffee year 2005/06 is 61.48 US cents/lb compared to 46.05 cents for the preceding coffee year and 36.37 cents in 2003/04. Consequently, the differential with Other Milds has narrowed.

7. Graph 2 shows movements of indicator prices for the four groups of coffee from October 2000 to August 2006.

New York and London futures markets

8. Graph 3 shows movements in the average of the 2nd and 3rd positions on the New York and London futures markets. In the New York futures market, which is sensitive to the situation of Arabicas, the average for coffee year 2005/06 was 108.06 US cents/lb compared to 108.03 cents for coffee year 2004/05. Prices of Arabicas remained relatively stable. By contrast, prices in the London futures market, which reflects the supply and demand situation for Robustas, were extremely volatile. The average for coffee year 2005/06 was 53.4 US cents/lb, an increase of 25.08% compared to the level for coffee year 2004/05.

Retail Prices

9. Table 2 shows average retail prices for roasted coffee in selected importing countries in current values for calendar years 2002 – 2005.

II. Supply

Production

10. Total production for crop year 2005/06 is 106.86 million bags compared to 113.96 million bags in 2004/05. Production of Arabicas during this crop year was 69.25 million bags compared to 37.61 million bags for Robustas. Arabicas accounted for 64.81% of world production in 2005/06 compared to 35.19% for Robustas. Table 3 shows total production by continent and by group of coffee for crop years 2002/03 to 2005/06. As regards crop year 2006/07, on the basis of preliminary information provided by some exporting countries, notably Brazil and Vietnam, total production can be estimated at around 122 million bags.

11. In **Africa**, production has fallen as a result of a number of difficulties, including the prolonged crisis period, the lack of investment in the coffee sector and various political and social crises. African production in crop year 2005/06 totalled 14.35 million bags, compared to 14.45 million in 2004/05. **Côte d'Ivoire**, formerly Africa's leading coffee producer, has seen its production reduced to 2 million bags, compared to around 4 million bags in the past. **Ethiopia**, now Africa's largest producer should maintain its production at the current level of 4.5 million bags if climatic conditions remain favourable. **Uganda's** production in crop year 2005/06 totalled 2.36 million bags. Graph 4 shows production in Ethiopia, Côte d'Ivoire and Uganda since crop year 1996/97.

12. In **Central and North America**, the situation varies. Whereas production has fallen in countries like Costa Rica, El Salvador and Guatemala, in Mexico, where production had fallen in 2004/05, there appears to be an increase in production for 2005/06. In the region as a whole, however, production increased by around 9.54% in 2005/06 totalling 17.07 million bags compared to 15.6 million in crop year 2004/05.

13. In **South America**, production in **Brazil** fell during crop year 2005/06 recording a level of 33.4 million bags. According to the latest estimates of CONAB, however, production in crop year 2006/07, will be some 41.57 million bags. Production in **Colombia** has been fluctuating between 11 and 12 million bags. In crop year 2005/06, production totalled 11 million bags compared to 12.04 million in 2004/05. Graph 5 shows developments in production in Brazil and Colombia since crop year 1996/97.

14. In **Asia/Oceania**, production in **Vietnam** fell during crop year 2005/06, down to 11 million bags compared to 13.84 million in 2004/05. For crop year 2006/07, which begins in October, there are indications that production will reach a level of 14.5 million bags. In **Indonesia**, although production in crop year 2005/06 reached a level of 8.34 million bags,

prospects remain uncertain. In crop year 2004/05 the level was 7.5 million bags. In **India** production totalled 4.6 million bags in 2005/06 but is threatened by the white stem borer disease that is affecting many coffee farms.

Stocks

15. Various sources have indicated a sharp decline in stocks both in exporting and importing countries. The lack of official information for exporting countries makes it impossible to provide precise estimates on stock levels. There is every indication, however, that some countries have been drawing down their stocks in order to meet export commitments. According to a report received in the second week of September 2006, Brazil, which has the highest level of stocks among exporting countries, has Government-held stocks totalling around 2.2 million bags. The level of closing stocks at the end of crop year 2005/06 is unlikely to be above 20 million bags. Everything also indicates that stocks in importing countries have likewise been reduced taking into account the fall in exports compared to levels in previous years. The industry has evidently made increasing use of its stocks. The level of stocks at the end of December 2005 is estimated at 19.8 million bags. Graph 6 shows movements in stocks (in exporting and importing countries) for the period since 1996/97. Table 4 shows supply of coffee by group.

Exports

16. Cumulative exports from October 2005 to July 2006 totalled 71.52 million bags, a fall of 5.69% compared to the figure of 75.83 million bags for the same period in 2004/05 (Table 5). The decline in exports affected all four groups of coffee. Graphs 7 and 8 show, respectively, volume and value of total exports to all destinations from coffee year 1996/97 to 2005/06 (estimated). Table 6 shows exports (volume and value) for coffee years 2002 to 2005, by groups.

III. Demand

Domestic consumption

17. Domestic consumption in exporting countries in coffee year 2005/06 is estimated at 30.38 million bags compared to 29.36 million bags in 2004/05 (Table 7). Brazil is by far the biggest consumer among exporting countries, accounting for slightly less than 16 million bags.

Consumption in importing countries

18. Consumption in importing countries is of the order of 85 million bags (Table 8). Per capita consumption in importing countries from 2001 to 2005 is shown in Table 9.

19. World consumption for 2006 is estimated at around 117 million bags compared to 115 million in 2005.

Conclusion

20. Market developments during coffee year 2005/06 seem to have contributed to a recovery in coffee prices and confirm the end of the crisis in the coffee industry in exporting countries. During the last months of coffee year 2005/06 there has been a marked recovery of Robusta prices, thus reducing the differential with Other Mild Arabicas.

LIST OF TABLES AND GRAPHS

Table

- 1 ICO composite and group prices and average of 2nd and 3rd positions in New York and London futures markets
Monthly averages: January 2000 to August 2006
(US cents/lb)
- 2 Retail prices of roasted coffee in selected importing countries
Calendar year averages: 2002 to 2005
(US cents/lb)
- 3 Total production by continent and by group
Crop years 2002/03 to 2005/06
(000 bags)
- 4 Supply of coffee by group
Crop years 2000/01 to 2005/2006
(000 bags)
- 5 Total exports to all destinations
October-July 2004/05 and 2005/06
(million bags)
- 6 Volume and value of annual exports
(volume in million bags – Value in billion US dollars)
- 7 Domestic consumption in selected exporting countries,
Crop years 2001 to 2005
(000 bags)
- 8 Trade and consumption in importing countries
Calendar years 2001 to 2005
(million bags)
- 9 Per capita consumption in importing countries
Calendar years 2001 to 2005
(kilograms)

Graph

- 1 ICO composite indicator price, monthly averages:
October 2000 to August 2006
- 2 Group indicator prices
Monthly averages: October 2000 to August 2006
- 3 Average of the 2nd and 3rd positions in New York and London terminal markets and differential
Monthly averages: October 2000 to August 2006
- 4 Production in Côte d'Ivoire, Ethiopia and Uganda
Crop years 1996/97 to 2005/06
- 5 Production in Brazil, Colombia and Vietnam
Crop years 1996/97 to 2005/06
- 6 Inventories in importing countries and stocks in exporting countries
Year commencing 1996 to 2005
- 7 Total exports to all destinations
Coffee years 1996/97 to 2005/06 (estimated)
- 8 Value of exports to all destinations
Coffee years 1996/97 to 2005/06 (estimated)

**Table 1: ICO composite and group prices, and average of 2nd and 3rd positions in New York
and London futures markets**
Monthly averages: January 2000 to August 2006
(US cents/lb)

	ICO composite	Colombian Milds	Other Milds	Brazilian Naturals	Robustas	Average 2nd/3rd		Differential		
						New York	London	CM-BN	OM-Rob	NY-Lon
Jan-00	82.14	130.13	111.11	97.68	53.18	119.02	52.07	32.45	57.93	66.95
Feb-00	76.15	124.73	103.44	91.51	48.86	109.75	48.21	33.22	54.58	61.54
Mar-00	73.49	119.51	100.73	89.93	46.25	106.97	44.99	29.58	54.48	61.98
Apr-00	69.53	112.67	94.61	86.46	44.45	100.88	43.14	26.21	50.16	57.74
May-00	69.23	110.31	94.15	87.23	44.32	101.17	42.75	23.08	49.83	58.41
Jun-00	64.56	100.30	86.44	78.32	42.68	94.29	41.87	21.98	43.76	52.43
Jul-00	64.08	101.67	87.35	79.89	40.82	96.48	39.87	21.78	46.53	56.61
Aug-00	57.58	91.87	76.91	70.57	38.25	86.69	37.31	21.30	38.66	49.38
Sep-00	57.30	89.98	75.78	71.14	38.83	84.85	36.68	18.84	36.95	48.17
Oct-00	56.39	90.25	76.65	72.28	36.14	86.63	34.96	17.97	40.51	51.68
Nov-00	52.17	84.01	71.54	68.95	32.81	77.82	30.81	15.06	38.73	47.01
Dec-00	48.27	75.81	66.15	64.39	30.38	70.43	28.60	11.42	35.77	41.83
Jan-01	49.19	75.33	65.98	62.38	32.40	70.13	29.76	12.95	33.58	40.38
Feb-01	49.38	76.70	67.19	62.50	31.58	66.71	28.81	14.20	35.61	37.90
Mar-01	48.51	76.94	66.50	60.35	30.52	65.30	27.63	16.59	35.98	37.67
Apr-01	47.31	78.25	66.13	55.11	28.49	62.74	26.20	23.14	37.64	36.53
May-01	49.38	80.92	69.22	57.19	29.55	67.40	26.58	23.73	39.67	40.82
Jun-01	46.53	74.38	63.90	51.86	29.16	62.26	26.28	22.52	34.74	35.98
Jul-01	43.07	69.70	58.72	46.43	27.42	57.43	24.28	23.27	31.30	33.15
Aug-01	42.76	73.50	59.71	46.49	25.81	55.72	22.53	27.01	33.90	33.19
Sep-01	41.17	68.80	58.06	42.42	24.27	52.32	20.84	26.38	33.79	31.48
Oct-01	42.21	62.87	56.40	38.63	23.23	48.09	18.02	24.24	33.17	30.07
Nov-01	44.24	64.89	58.85	42.82	23.67	49.74	17.64	22.07	35.18	32.10
Dec-01	43.35	62.33	56.72	42.21	24.42	48.48	18.44	20.12	32.30	30.04
Jan-02	43.46	62.51	58.25	43.14	22.81	51.14	17.43	19.37	35.44	33.71
Feb-02	44.30	62.67	59.11	43.17	24.37	48.49	18.80	19.50	34.74	29.70
Mar-02	49.49	68.27	64.47	48.70	29.06	54.60	22.92	19.57	35.41	31.68
Apr-02	50.20	69.63	65.29	49.52	29.31	57.44	23.93	20.11	35.98	33.52
May-02	47.30	65.95	61.40	45.39	28.31	52.88	23.79	20.56	33.09	29.09
Jun-02	45.56	62.94	58.56	43.00	28.42	52.19	24.29	19.94	30.14	27.91
Jul-02	44.70	60.60	56.48	43.30	28.60	52.37	24.19	17.30	27.88	28.18
Aug-02	42.79	58.10	54.27	40.18	27.88	52.60	23.99	17.92	26.39	28.61
Sep-02	47.96	64.15	60.66	44.53	32.08	60.29	28.53	19.62	28.58	31.76
Oct-02	50.79	67.92	65.73	46.08	33.32	65.67	30.90	21.84	32.41	34.77
Nov-02	54.68	70.70	69.87	49.25	37.89	70.43	35.63	21.45	31.98	34.81
Dec-02	51.69	65.38	64.16	46.55	38.06	66.14	36.11	18.83	26.10	30.03
Jan-03	54.04	67.27	65.57	49.31	41.18	68.60	38.96	17.96	24.39	29.64
Feb-03	54.07	67.47	66.41	48.97	40.67	66.47	38.31	18.50	25.74	28.16
Mar-03	49.61	62.15	61.75	43.77	37.17	61.64	34.15	18.38	24.58	27.49
Apr-03	51.87	64.40	64.69	48.55	37.42	65.16	34.56	15.85	27.27	30.60
May-03	53.19	65.73	66.26	51.12	37.80	67.35	34.47	14.61	28.46	32.89
Jun-03	48.90	61.61	61.04	46.88	34.21	62.28	31.44	14.73	26.83	30.84
Jul-03	50.89	64.88	62.95	49.50	35.35	64.06	32.13	15.38	27.60	31.94
Aug-03	52.22	65.65	63.89	52.48	36.30	65.31	33.51	13.17	27.59	31.80
Sep-03	54.10	67.55	66.41	54.86	37.35	67.53	34.53	12.69	29.06	33.00
Oct-03	51.72	66.17	64.29	52.81	35.88	65.85	33.11	13.36	28.41	32.75
Nov-03	49.80	64.39	62.27	50.73	34.11	62.84	31.28	13.66	28.16	31.56
Dec-03	52.44	66.68	64.85	54.79	35.90	65.82	32.85	11.89	28.95	32.97
Jan-04	58.68	73.76	72.73	62.06	39.84	74.86	35.95	11.70	32.89	38.91
Feb-04	59.87	76.53	76.20	65.52	37.05	75.75	34.68	11.01	39.15	41.07
Mar-04	60.80	77.97	78.06	66.97	36.70	76.67	33.54	11.00	41.36	43.14
Apr-04	58.80	75.22	75.44	63.70	36.37	73.51	33.57	11.52	39.07	39.93
May-04	59.91	77.17	76.99	65.16	36.56	75.62	33.31	12.01	40.43	42.31
Jun-04	64.28	82.51	82.21	69.61	39.87	81.48	35.93	12.90	42.34	45.55
Jul-04	58.46	76.13	74.94	62.89	36.02	73.40	32.18	13.24	38.92	41.23
Aug-04	56.98	75.35	73.61	61.75	33.91	72.73	30.88	13.60	39.70	41.85
Sep-04	61.47	81.02	80.47	68.90	34.24	80.37	30.63	12.12	46.23	49.74
Oct-04	61.10	83.02	80.55	69.91	31.67	79.79	28.23	13.11	48.88	51.56
Nov-04	67.74	92.83	90.27	79.39	32.71	87.98	29.94	13.44	57.56	58.04
Dec-04	77.72	105.75	104.12	91.76	36.92	102.18	35.30	13.99	67.20	66.88
Jan-05	79.35	108.22	107.16	93.63	36.96	104.57	34.13	14.59	70.20	70.44
Feb-05	89.40	121.56	120.86	106.11	41.24	117.14	39.05	15.45	79.62	78.09
Mar-05	101.44	135.54	135.03	120.12	49.51	131.04	45.44	15.42	85.52	85.60
Apr-05	98.20	129.51	129.53	114.48	50.75	124.84	47.36	15.03	78.78	77.48
May-05	99.78	128.87	128.37	114.96	56.07	123.67	52.18	13.91	72.30	71.49
Jun-05	96.29	121.29	121.16	107.23	60.02	117.29	56.40	14.06	61.14	60.89
Jul-05	88.48	110.79	109.93	96.56	57.88	106.67	53.83	14.23	52.05	52.84
Aug-05	85.31	108.94	108.20	94.98	51.97	105.79	48.76	13.96	56.23	57.02
Sep-05	78.79	101.15	99.49	89.48	46.87	95.37	42.04	11.67	52.62	53.32
Oct-05	82.55	106.21	105.05	94.40	47.53	103.65	43.49	11.81	57.52	60.16
Nov-05	85.93	109.00	107.74	97.96	51.45	104.89	46.90	11.04	56.29	57.99
Dec-05	86.85	107.69	105.77	97.57	56.39	101.58	52.07	10.12	49.38	49.51
Jan-06	101.20	126.92	124.20	114.98	63.39	122.52	57.39	11.94	60.81	65.12
Feb-06	97.39	121.31	119.12	109.01	62.98	115.46	55.74	12.30	56.14	59.72
Mar-06	92.76	116.01	113.66	103.92	59.60	109.72	52.22	12.09	54.06	57.50
Apr-06	94.20	117.87	115.42	105.49	60.55	112.08	53.67	12.38	54.87	58.40
May-06	90.00	111.81	109.36	99.29	60.08	106.53	53.05	12.52	49.28	53.48
Jun-06	86.04	105.83	103.15	93.27	60.23	100.55	53.12	12.56	42.92	47.44
Jul-06	88.57	107.85	105.00	94.56	64.49	101.99	57.14	13.29	40.51	44.84
Aug-06	95.78	114.14	111.73	100.37	73.59	110.54	63.01	13.77	38.14	47.54

Table 2: Retail prices of roasted coffee in selected importing countries Calendar year averages (US cents/lb)				
	2002	2003	2004	2005
<i>European Community</i>				
Austria	285.70	317.98	333.10	376.66
Belgium	305.13	359.53	387.23	409.99
Cyprus	405.01	491.67	523.35	528.36
Denmark	309.24	356.94	395.72	427.99
Finland	184.03	213.11	233.74	259.54
France	207.23	249.82	272.08	274.78
Germany	272.71	317.96	332.58	406.37
Italy	457.12	546.72	601.12	612.75
Latvia	321.64	335.35	371.66	392.61
Luxembourg	428.50	528.24	578.92	604.07
Netherlands	260.34	320.01	347.29	375.17
Poland	211.22	212.21	225.79	256.34
Portugal	385.32	455.63	484.90	481.70
Slovakia	219.89	247.06	269.97	278.57
Slovenia	310.50	373.95	372.59	372.44
Spain	258.11	300.07	323.38	322.26
Sweden	255.03	293.55	308.34	299.17
United Kingdom 1/	1 210.68	1 333.62	1 455.58	1 474.26
<i>Other importing countries</i>				
Japan	812.51	818.55	875.00	822.50
Norway	309.10	348.00	383.70	410.72
Switzerland	446.12	512.44	568.54	594.29
USA	292.38	291.63	284.94	326.84

1/ Soluble coffee

**Table 3: Total production by continent and by group
CROP YEARS 2002/03 TO 2005/06**

(000 bags)					
Crop year commencing	2002	2003	2004	2005	% change 2004-2005
<u>TOTAL</u>	121 774	104 014	113 962	106 862	-6.23
<i>Africa</i>	<i>14 612</i>	<i>13 899</i>	<i>14 450</i>	<i>14 355</i>	<i>-0.66</i>
Cameroon	801	900	727	1 000	37.55
Cote d'Ivoire	3 145	2 689	2 328	2 171	-6.74
Ethiopia	3 693	3 874	5 000	4 500	-10.00
Kenya	945	673	709	1 002	41.33
Tanzania	824	611	763	720	-5.64
Uganda	2 890	2 598	2 593	2 366	-8.75
Others	2 314	2 554	2 330	2 596	11.42
<i>Arabicas</i>	<i>6 716</i>	<i>6 783</i>	<i>8 053</i>	<i>7 604</i>	<i>-5.58</i>
<i>Robustas</i>	<i>7 896</i>	<i>7 116</i>	<i>6 397</i>	<i>6 752</i>	<i>5.55</i>
<i>Asia&Oceania</i>	<i>25 622</i>	<i>28 766</i>	<i>27 423</i>	<i>26 536</i>	<i>-3.23</i>
India	4 683	4 495	3 844	4 630	20.45
Indonesia	6 785	6 571	7 536	8 340	10.67
Papua New Guinea	1 085	1 155	997	1 267	27.08
Thailand	758	846	797	764	-4.14
Vietnam	11 555	15 230	13 844	11 000	-20.54
Others	756	469	405	535	32.10
<i>Arabicas</i>	<i>4 245</i>	<i>4 000</i>	<i>3 802</i>	<i>4 200</i>	<i>10.47</i>
<i>Robustas</i>	<i>21 377</i>	<i>24 766</i>	<i>23 621</i>	<i>22 336</i>	<i>-5.44</i>
<i>Mexico & Central America</i>	<i>16 358</i>	<i>16 984</i>	<i>15 583</i>	<i>17 069</i>	<i>9.54</i>
Costa Rica	1 893	1 783	1 887	1 778	-5.78
El Salvador	1 438	1 457	1 447	1 372	-5.18
Guatemala	4 070	3 610	3 703	3 675	-0.76
Honduras	2 497	2 968	2 575	2 990	16.12
Mexico	4 000	4 550	3 407	4 200	23.28
Nicaragua	1 199	1 405	1 283	1 718	33.90
Others	1 261	1 211	1 281	1 336	4.29
<i>Arabicas</i>	<i>16 340</i>	<i>16 965</i>	<i>15 566</i>	<i>17 022</i>	<i>9.35</i>
<i>Robustas</i>	<i>18</i>	<i>19</i>	<i>17</i>	<i>47</i>	<i>176.47</i>
<i>South America</i>	<i>65 182</i>	<i>44 365</i>	<i>56 506</i>	<i>48 902</i>	<i>-13.46</i>
Brazil	48 617	28 823	39 283	33 371	-15.05
Colombia	11 889	11 197	12 042	11 000	-8.65
Ecuador	732	766	938	1 125	19.94
Others	3 944	3 579	4 243	3 406	-19.73
<i>Arabicas</i>	<i>55 163</i>	<i>37 260</i>	<i>51 364</i>	<i>40 422</i>	<i>-21.30</i>
<i>Robustas</i>	<i>10 019</i>	<i>7 105</i>	<i>5 142</i>	<i>8 480</i>	<i>64.92</i>
<u>TOTAL</u>	121 774	104 014	113 962	106 862	-6.23
Colombian Milds	13 330	12 352	13 292	12 480	-6.11
Other Milds	26 485	26 662	25 908	26 644	2.84
Brazilian Naturals	42 657	25 999	39 590	30 129	-23.90
Robustas	39 302	39 001	35 172	37 609	6.93
Arabicas	82 472	65 013	78 790	69 253	-12.10
Robustas	39 302	39 001	35 172	37 609	6.93
<u>TOTAL</u>	100.00	100.00	100.00	100.00	
Colombian Milds	10.95	11.88	11.66	11.68	
Other Milds	21.75	25.63	22.73	24.93	
Brazilian Naturals	35.03	25.00	34.74	28.19	
Robustas	32.27	37.50	30.86	35.19	
Arabicas	67.73	62.50	69.14	64.81	
Robustas	32.27	37.50	30.86	35.19	

Table 4: Supply of coffee by group
Crop years 2000/01 to 2005/06

(000 bags)						
Crop commencing	2000	2001	2002	2003	2004	2005
<u>TOTAL PRODUCTION</u>	<u>115 278</u>	<u>106 570</u>	<u>121 774</u>	<u>104 014</u>	<u>113 962</u>	<u>106 862</u>
Colombian Milds	12 161	13 390	13 330	12 352	13 292	12 480
Other Milds	29 173	27 122	26 485	26 662	25 908	26 644
Brazilian Naturals	32 301	28 767	42 657	25 999	39 590	30 129
Robustas	41 643	37 291	39 302	39 001	35 172	37 609
<i>Arabicas</i>	<i>73 635</i>	<i>69 279</i>	<i>82 472</i>	<i>65 013</i>	<i>78 790</i>	<i>69 253</i>
<i>Robustas</i>	<i>41 643</i>	<i>37 291</i>	<i>39 302</i>	<i>39 001</i>	<i>35 172</i>	<i>37 609</i>
<u>DOMESTIC CONSUMPTION</u>	<u>26 249</u>	<u>27 546</u>	<u>27 805</u>	<u>28 466</u>	<u>29 362</u>	<u>30 383</u>
Colombian Milds	1 460	1 460	1 459	1 466	1 471	1 477
Other Milds	5 130	5 562	5 518	5 634	5 825	5 764
Brazilian Naturals	12 359	11 822	12 814	11 697	13 968	13 383
Robustas	7 300	8 702	8 014	9 669	8 098	9 759
<i>Arabicas</i>	<i>18 949</i>	<i>18 844</i>	<i>19 791</i>	<i>18 797</i>	<i>21 264</i>	<i>20 624</i>
<i>Robustas</i>	<i>7 300</i>	<i>8 702</i>	<i>8 014</i>	<i>9 669</i>	<i>8 098</i>	<i>9 759</i>
<u>EXPORTABLE PRODUCTION</u>	<u>89 029</u>	<u>79 024</u>	<u>93 969</u>	<u>75 548</u>	<u>84 600</u>	<u>76 479</u>
Colombian Milds	10 701	11 930	11 871	10 886	11 821	11 003
Other Milds	24 043	21 560	20 967	21 028	20 083	20 880
Brazilian Naturals	19 942	16 945	29 843	14 302	25 622	16 746
Robustas	34 343	28 589	31 288	29 332	27 074	27 850
<i>Arabicas</i>	<i>54 686</i>	<i>50 435</i>	<i>62 681</i>	<i>46 216</i>	<i>57 526</i>	<i>48 629</i>
<i>Robustas</i>	<i>34 343</i>	<i>28 589</i>	<i>31 288</i>	<i>29 332</i>	<i>27 074</i>	<i>27 850</i>
<u>GROSS OPENING STOCKS</u>	<u>40 073</u>	<u>41 705</u>	<u>35 699</u>	<u>39 704</u>	<u>28 172</u>	<u>24 928</u>
Colombian Milds	2 587	1 957	2 051	2 071	1 520	1 155
Other Milds	2 276	2 628	3 073	2 480	2 693	2 360
Brazilian Naturals	28 503	30 192	24 238	28 194	18 584	17 671
Robustas	6 707	6 928	6 337	6 959	5 375	3 742
<i>Arabicas</i>	<i>33 366</i>	<i>34 777</i>	<i>29 362</i>	<i>32 745</i>	<i>22 797</i>	<i>21 186</i>
<i>Robustas</i>	<i>6 707</i>	<i>6 928</i>	<i>6 337</i>	<i>6 959</i>	<i>5 375</i>	<i>3 742</i>
<u>TOTAL EXPORTS</u>	<u>87 659</u>	<u>85 262</u>	<u>89 968</u>	<u>87 598</u>	<u>89 296</u>	
Colombian Milds	11 331	11 837	11 851	11 438	12 186	
Other Milds	23 975	21 350	21 564	20 809	20 418	
Brazilian Naturals	18 227	22 879	25 884	23 879	27 742	
Robustas	34 126	29 196	30 669	31 472	28 950	
<i>Arabicas</i>	<i>53 533</i>	<i>56 066</i>	<i>59 299</i>	<i>56 126</i>	<i>60 346</i>	
<i>Robustas</i>	<i>34 126</i>	<i>29 196</i>	<i>30 669</i>	<i>31 472</i>	<i>28 950</i>	

**Table 5: Total Exports to All Destinations
October-July 2004/05 and 2005/06**

(million bags)

	2004/05	2005/06	% variation
TOTAL	75.83	71.52	-5.69
Colombian Milds	10.63	9.82	-7.60
Other Milds	17.41	17.14	-1.55
Brazilian Naturals	22.97	20.87	-9.14
Robustas	24.81	23.68	-4.58
Arabicas	51.01	47.84	-6.23
Robustas	24.81	23.68	-4.58

Table 6: Volume and value of annual exports

	2002	2003	2004	2005
Colombian Milds				
- Volume	11.36	11.72	11.39	12.00
- Value	0.98	1.04	1.22	1.78
Other Milds				
- Volume	21.65	21.14	21.98	19.41
- Value	1.70	1.75	2.16	2.68
Brazilian Naturals				
- Volume	24.61	23.69	26.31	25.62
- Value	1.31	1.47	2.03	2.97
Robustas				
- Volume	30.84	29.38	31.05	29.64
- Value	1.14	1.34	1.47	1.81
Total				
- Volume	88.46	85.93	90.73	86.67
- Value	5.13	5.60	6.88	9.24

Volume in million bags - value in billion US\$

Table 7: Domestic consumption in selected exporting countries
Crop years 2001 to 2005

(000 bags)

Crop year commencing	2001	2002	2003	2004	2005
<u>TOTAL</u>	<u>27 547</u>	<u>27 804</u>	<u>28 465</u>	<u>29 363</u>	<u>30 384</u>
Brazil	13 600	14 000	14 200	14 900	15 950
Indonesia	2 000	1 833	2 000	2 000	2 000
Ethiopia	1 833	1 833	1 833	1 833	1 833
Mexico	1 500	1 500	1 500	1 500	1 500
Colombia	1400	1 400	1 400	1 400	1 400
India	1134	1134	1134	1134	1134
Philippines	821	829	917	917	917
Venezuela	690	690	700	700	710
Thailand	500	500	500	500	500
Vietnam	500	500	500	500	500
Dominican Republic	340	340	340	378	378
Haiti	340	340	340	340	340
Madagascar @	128	217	333	333	333
Cote d'Ivoire @	317	317	317	317	317
Costa Rica	255	225	272	366	302
Guatemala	300	300	300	300	300
Honduras	200	200	200	230	230
Cuba	220	224	224	224	224
Congo, Dem. Rep. of	200	200	200	200	200
Nicaragua	181	185	190	190	190
El Salvador	144	153	153	173	173
Ecuador	200	150	150	150	150
Others	744	734	762	778	803

Table 8: Trade and consumption in importing countries
Calendar years 2001 to 2005

	(million bags)				
	2001	2002	2003	2004	2005
Importing Members					
a. Imports	85 378	87 077	89 259	92 325	93 078
b. Re-exports	19 716	20 963	22 243	24 031	27 005
c. Net Imports (a)-(b)	65 662	66 114	67 015	68 294	66 073
d. Inventories of green coffee at the end of year	9 442	10 112	9 962	9 586	9 128
e. Disappearance	65 555	65 444	67 165	68 670	66 531
Non-members					
Net imports	16 232	17 277	16 515	18 276	18 500
Consumption of all importing countries	81 787	82 721	83 680	86 946	85 031
Consumption of selected countries					
<i>European Union</i>	37 747	38 182	38 364	39 348	36 687
Austria	1 049	952	757	1 033	810
Belgium/Luxembourg	987	1 635	1 719	1 458	1 307
Czech Republic	655	646	556	546	534
Denmark	863	806	725	849	814
Finland	952	975	971	1 041	1 048
France	5 241	5 492	5 429	5 001	5 053
Germany	9 475	9 064	9 076	10 177	8 052
Greece	578	864	1 003	928	911
Hungary	740	709	611	561	392
Italy	5 252	5 180	5 503	5 405	5 460
Netherlands	1 732	1 641	1 827	1 599	1 454
Poland	1 958	1 952	2 096	2 202	2 133
Portugal	768	738	679	771	749
Spain	2 869	2 907	2 826	2 791	2 959
Sweden	1 259	1 235	1 181	1 242	1 162
United Kingdom	2 185	2 201	2 189	2 391	2 396
Other EU members	1 184	1 185	1 215	1 356	1 452
Japan	6 936	6 875	6 770	7 117	7 224
Norway	711	692	682	710	743
Switzerland	819	824	845	712	1 105
USA	19 343	18 871	20 505	20 783	20 771

1/ Includes estimates

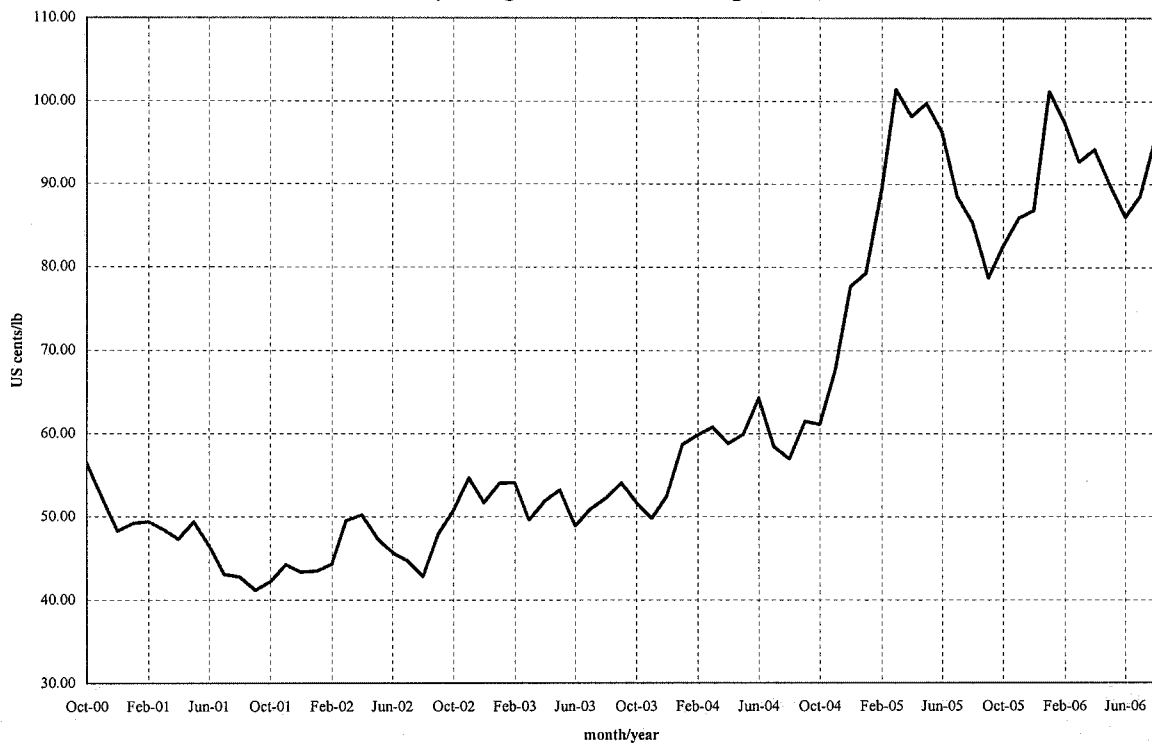
**Table 9: Per capita consumption in importing countries
Calendar years 2001 to 2005**

	(kilograms)				
	2001	2002	2003	2004	2005
TOTAL	4.50	4.46	4.55	4.64	4.48
<i>European Community</i>	<i>5.01</i>	<i>5.05</i>	<i>5.05</i>	<i>5.17</i>	<i>4.82</i>
Austria	7.83	7.07	5.59	7.59	5.95
Belgium/Luxembourg	5.52	9.10	9.52	8.08	7.25
Cyprus	4.54	4.39	4.50	5.19	5.59
Czech Republic	3.85	3.80	3.27	3.21	3.14
Denmark	9.66	9.01	8.07	9.42	9.04
Estonia	4.85	4.94	5.24	5.91	6.67
Finland	11.01	11.24	11.19	11.94	12.02
France	5.31	5.54	5.45	5.02	5.07
Germany	6.90	6.59	6.60	7.40	5.86
Greece	3.47	4.72	5.46	5.05	4.96
Hungary	4.35	4.19	3.62	3.32	2.32
Ireland	2.30	2.08	2.27	3.22	3.36
Italy	5.44	5.44	5.73	5.58	5.63
Latvia	3.97	3.87	4.38	4.36	4.31
Lithuania	3.50	3.60	3.28	4.10	4.38
Malta	2.31	4.00	5.10	3.90	3.45
Netherlands	6.47	6.10	6.76	5.89	5.36
Poland	3.07	3.06	3.29	3.46	3.35
Portugal	4.48	4.28	3.90	4.41	4.28
Slovakia	3.45	3.32	3.55	3.56	4.10
Slovenia	5.82	6.03	5.46	5.85	6.00
Spain	4.24	4.23	4.05	4.00	4.24
Sweden	8.49	8.31	7.91	8.28	7.76
United Kingdom	2.22	2.23	2.21	2.40	2.40
<i>Other importing countries</i>	<i>3.95</i>	<i>3.84</i>	<i>4.03</i>	<i>4.07</i>	<i>4.12</i>
Japan	3.27	3.24	3.18	3.34	3.40
Norway	9.46	9.15	8.95	9.27	9.71
Switzerland	6.80	6.78	6.90	5.77	8.97
USA 1/	4.09	3.95	4.25	4.26	4.22

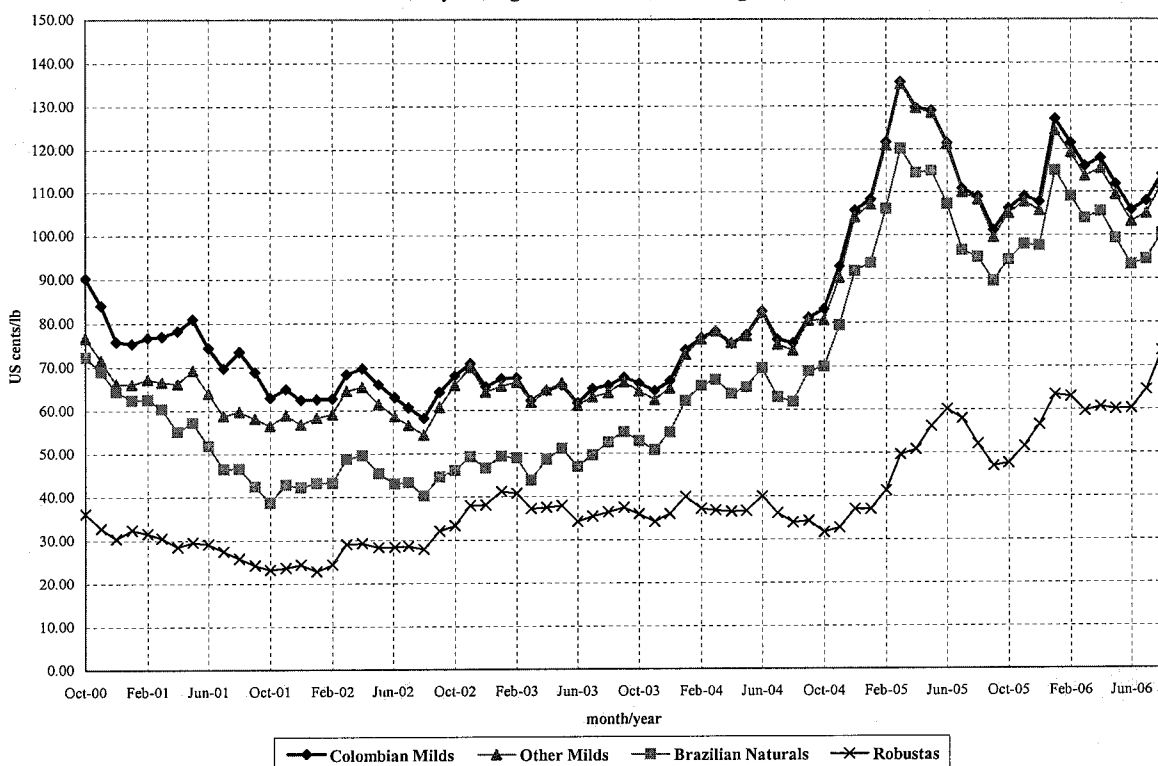
The data contained in this table are derived from the disappearance in importing countries and information on population

1/ Based on estimates of civilian population by the United States Department of Commerce

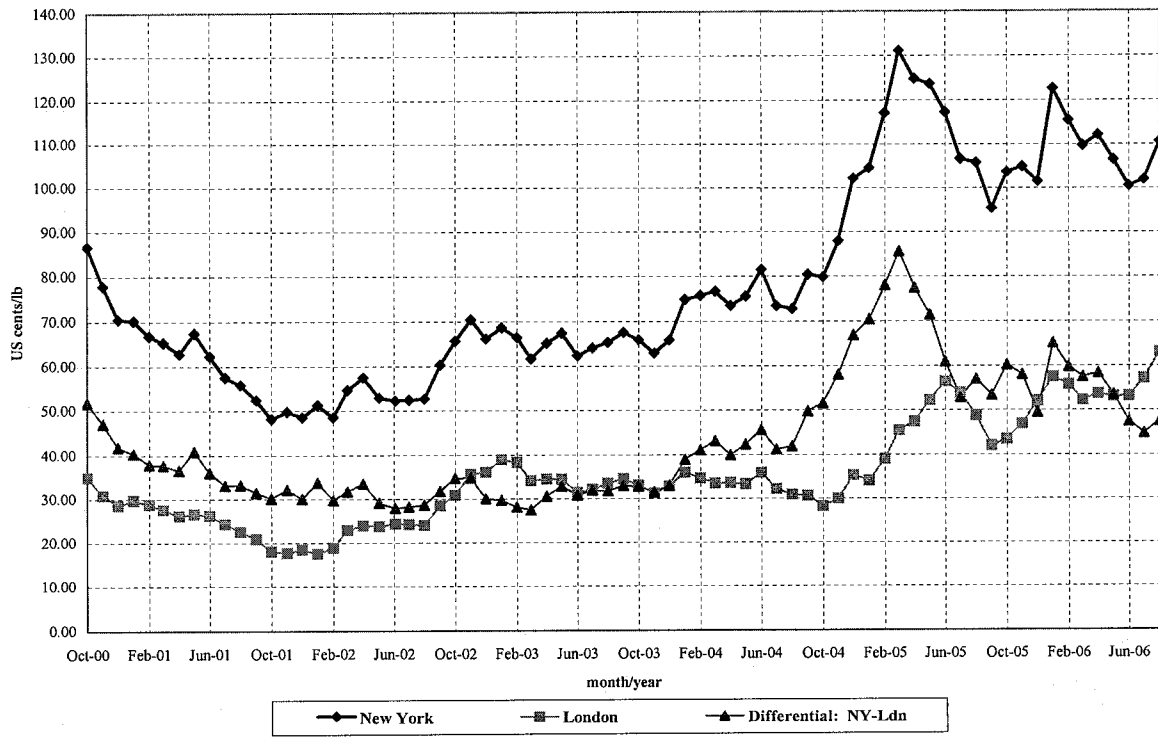
Graph 1: ICO composite indicator price
Monthly averages: October 2000 to August 2006



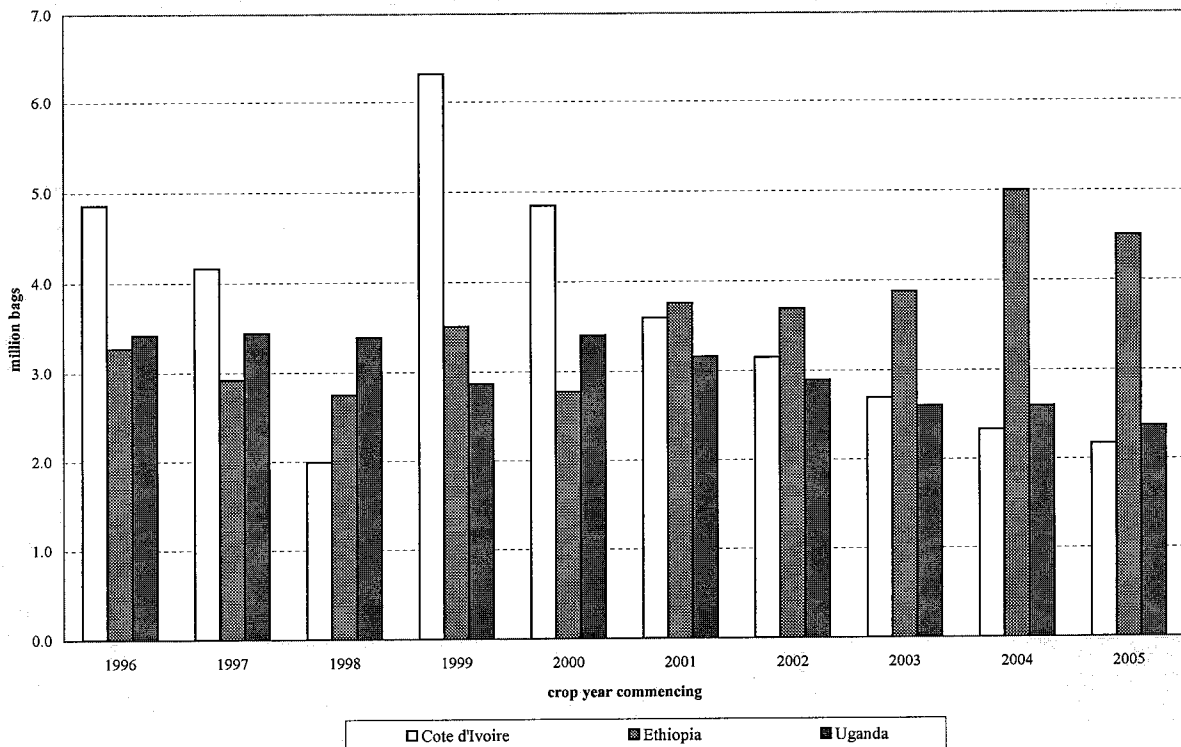
Graph 2: Group indicators prices
Monthly averages: October 2000 to August 2006



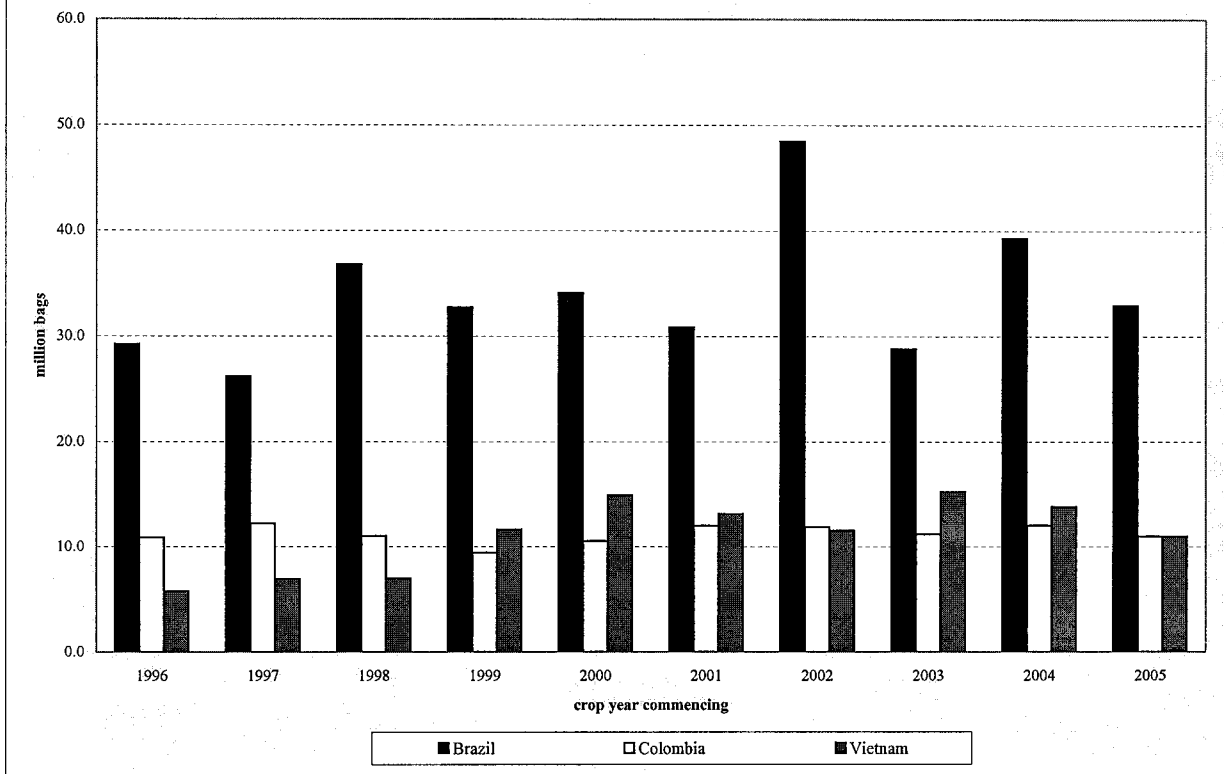
Graph 3: Average of the 2nd and 3rd positions in New York and London terminal markets and differential
 Monthly averages: October 2000 to August 2006



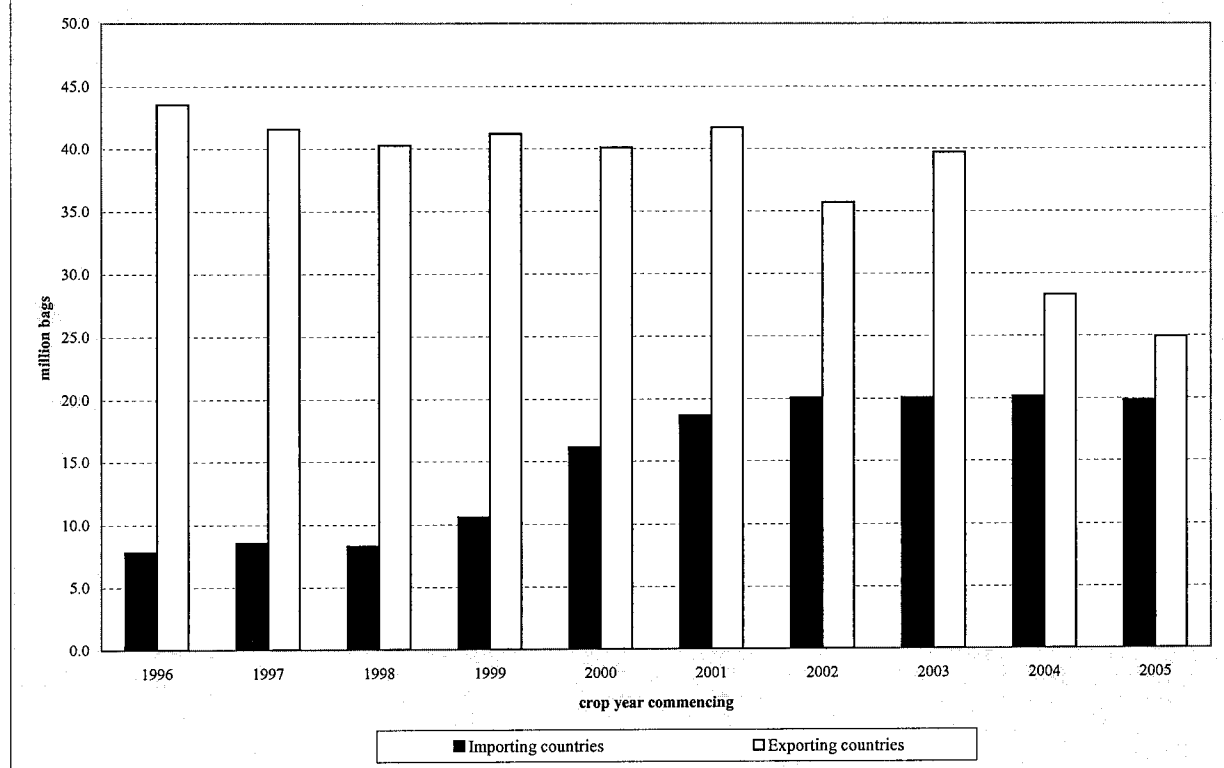
Graph 4: Production in Cote d'Ivoire, Ethiopia and Uganda
 Crop years 1996/97 to 2005/06



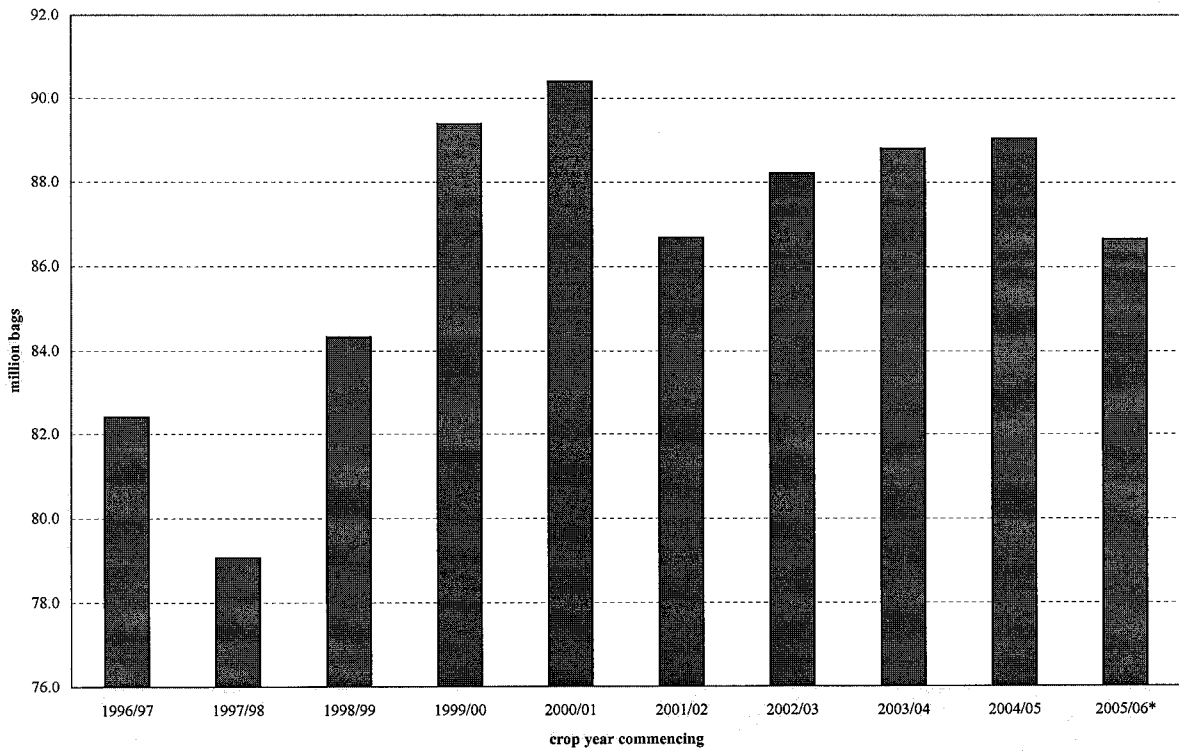
**Graph 5: Production in Brazil, Colombia and Vietnam
Crop years 1996/97 to 2005/06**



**Graph 6: Inventories in importing countries and stocks in exporting countries
Year commencing 1996 to 2005**



**Graph 7: Total exports to all destinations
Coffee years 1996/97 to 2005/06***



**Graph 8: Value of exports to all destinations
Coffee years 1996/97 to 2005/06***

